



Best Practices

No. of Schools Covered (2014-15)

Schools	Government	Aided	Total
Primary School (1 to 5)	22000	223	22223
Upper Primary Schools with Primary Schools (1 to 8)	22540	2684	25224
Upper Primary schools (6 to 8)+(8 to 10)	4580	3657	8237
AIE Centers	0	0	0
Madarasas	0	0	92
NCLP	0	0	106
Total	49120	6564	55882
No. Of Schools Approved in PAB 2014-15	49120	6564	55882

The number of schools during 2013-14 is 55173.

Beneficiaries during 2014-15 (All Managements)

Class	PAB approval	Enrolment	Beneficiaries	% Benifi vs PAB app.	% Benifi vs. Enrol.
1 to 5	31.54	33.09	31.86	101.01%	96.28%
6 to 8	19.00	19.96	18.69	98.37%	93.64%
9 and 10	10.50	11.63	10.85	103.33%	93.29%
Total	61.04	64.68	61.4	100.59%	94.93%

Note:- 1 to 5: +1.01%, 6 to 8: -1.63%, 9 and 10 +3.33% difference b/w the approval and Beneficiaries : The percentage of children during 2013-14 it is 94.58 to 94.93 in 2014-15.

Source: MIS

Balanced nutritious new menu

Food Menu 2014-15

Days	Menu	Vegetables to be used
Monday	Rice Sambar	Palk and drumstrick leaves and other leaves, Alu, Brinjal, Onion, Tomato, etc.
Tuesday	Rice Sambar	White pumpkin, carrot, Beans, Cabbage, Beetroot, Tomato, etc.
Wednesday	Rice Sambar	Drumstrick, Alu , Onion, Tomato etc.
Thursday	Rice Sambar	Pumpkin, Bottleguard, curry cucumber, Ladies finger, Raddish, Ridgeguard etc.
Friday	Bisibelebath	Beans, Turnip, Carrot, Capsicum, Onion, Tomato, Cereals.
Saturday	Food product from Wheat	Carrot, Beans, Cabbages, Onion, Dillgreens and other cereals

***: This menu is flexible and suggested to use locally available seasoned vegetables and green leaves.**

Best Practices

Women CCH

- Women CCHs are engaged in all schools, preference given to widows & destitute women.

Category	Numbers	Percentage
Women	1,10,699	100.00%
SC's	26,698	24.11%
ST's	13,188	11.91%
Others	70,813	63.98%



Best Practices

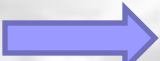
Kitchen Garden

- Kitchen Gardens are maintained in 16,191 schools out of 55882 (29%). The main objective of maintaining kitchen gardens is growing required vegetables & green leaves in schools with the help of children for MDM.
- There are some kitchen gardens also are being maintained with the convergence of department of Horticulture at district & Taluka level. It reserved a small portion of budget exclusively for kitchen gardens in karnataka.

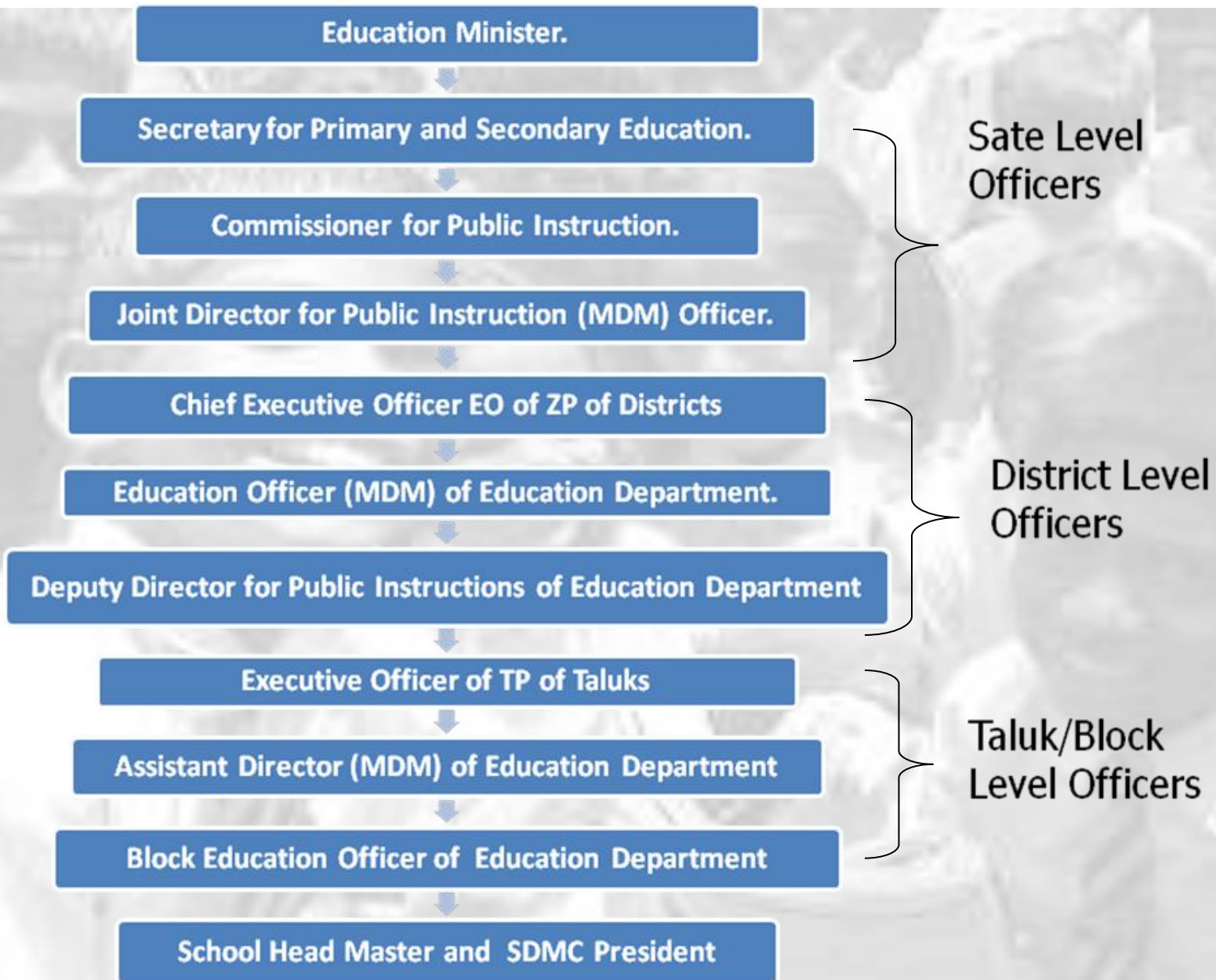


Best Practices

MDM Implemented by RDPR

- In karnataka MDM is being implemented by RDPR at district & Taluka level. This is one of the unique and striking feature of MDM in karnataka. Stake holder such as SDMC, parents & people representatives are actively involving in implementation of the program. They feel the owner ship of the program.
- A recent visit to tumkur by JD , where President Zilla panchayath, CEO of Zilla Panchayath participated in review meeting of MDM. Both the dignataries highlighted the importance of MDM and active involvement of all officials of ZP. Even he suggested to visit offenly the remotest school and there should not be any complaint of non serving schools of MDM.
- Flow chart : 

Management & Monitoring System:



Best Practices

Samudayadatta Shale

- To ensure quality in primary education and to encourage community participation a program called as Samudayadatta Shale program is implemented through Officers of the department, primary and high school teachers visit to specified schools in nearly 40,000 villages on that particular day. The program is being implemented twice in a year.
- On that day the community would review the performance of MDM in the presence of the personnel of the department. All schools will be covered twice in a year.

Best Practices

Involvement of NGO'S

- GOK is providing Mid Day Meals to some of the schools with the help of some of the prominent NGO'S such as
- The Akshaya Patra Foundation is a not-for-profit organisation head quartered in Bangalore, India. The organisation strives to fight issues such as hunger and malnutrition in the country.
- It serves 4,55,902 children in 2497 schools.
- Adhamya chetana : it is also one of the not-for-profit organisation it serves 1,14,668 children in 744 schools.
- In addition to that there are 78 NGO'S are working with GOK as per the guidelines lied by the GOK.



Best Practices

Micro nutrients

➤ The following tablets are giving to the students with the convergence of NRHM & GOK as additional nutrients.

Class	Tablet Names	Prescription	No. of Tablets per Child per Year	Scheme
1 to 10th	IFA (WIFS)	once in a week	36	NRHM
	ALBENDOZOLE 400mg	Once in 6 Months 1 Tablet	2	
1 to 7	VITAMIN A 2Lakh IU	Once in 6 Months 1 Tablet	2	GOK

Ksheera Bhagya Yojana

GOK has introduced Kshera Bhagya Yojane on 01-08-2013. 18 grams of Skimmed Milk Powder is converted into 150ml of hot Milk is given to all children from 1 to 10th Std in Govt and Aided Schools thrice a week (alternative days). Rs. 4.64 is spent per child per day.

Karnataka Milk Federation (KMF) is supplying the Skimmed Milk powder to all schools.

Cost per Child per Time

Sl. No	Details	Quantity	Cost
1	Skimmed Milk Powder	18 Grams	4.59
2	Sugar	10 Grams	0.32
3	Fuel	-	0.15
4	Other	-	0.12
Total			5.18
CCH honorium per month			Rs. 100



Rs. 37990.33 Lakhs is Allocated from GOK for Ksheera Bhagya Yojane in 2014-15



Thank You all



MDM Karnataka